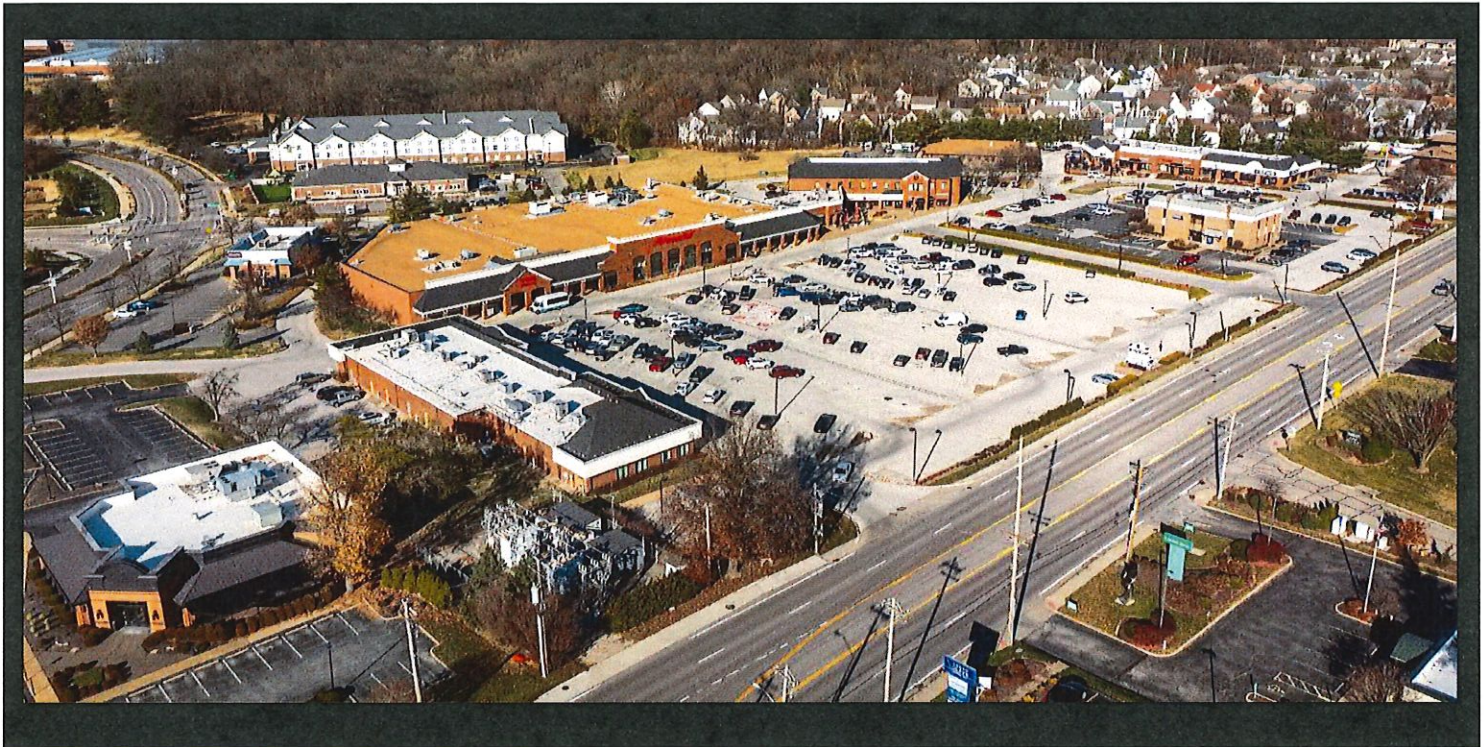


HILLTOWN VILLAGE CENTER – SPACE AVAILABLE FOR LEASE

At the Corner of Olive Blvd & Chesterfield Pkwy



PROPERTY DEMOGRAPHICS

	1 Miles	3 Miles	5 Miles
Population:	5,773	44,088	108,299
Households:	2,641	18,050	43,412
Avg HH Inc:	\$126,240	\$174,278	\$167,160
Traffic Counts:	Annual Average Daily Traffic (AADT)		
Olive Blvd:	33,707	Chesterfield Parkway: 9,545	

PROPERTY HIGHLIGHTS

- 148,824 TOTAL SF
- SPACE AVAILABLE: SUITE 179 – 1,200 SF
- SUITE 123 – 1,165 SF
- SUITE 126 – 1,554 SF
- CURRENT TENANTS INCLUDE SCHNUCK'S, FIRST WATCH, U.S. BANK, AND MELLOW MUSHROOM
- LOCATED ALONG OLIVE BLVD LESS THAN A MILE FROM HWY 40

LEASE RATE: \$22 PSF

CONTACT INFORMATION

Contact

Reed Montgomery

(314) 968-6840 (office)

(314) 616-0727 (cell)

rmontgomery@monpromgt.com

Andrew Montgomery

(314) 957-4077 (office)

(314) 779-8889 (cell)

andrew.montgomery@montgomeryig.net



The information contained herein has been given to us by reliable sources. All information should be verified prior to lease.

13303 Manchester Rd. St. Louis, MO. 63131

Tenant / Building Roster

Bldg.	Tenant	Area
A	Multi-Tenant Retail	12,741sf
B	Daylight Donuts	3,000sf
C	Schnuck's	60,708sf
D	Multi-Tenant	22,156sf
E	US Bank	9,466sf
F	Mellow Mushroom	6,900sf
G	Multi-Tenant-Retail	14,993sf
H	Mini-Skool	6,300sf
I	West Co. Day School	12,559sf



Overall Site Plan

N.T.S.



Montgomery Properties
20 Allen Avenue, Ste. 341
St. Louis, MO 63119
314-968-8033

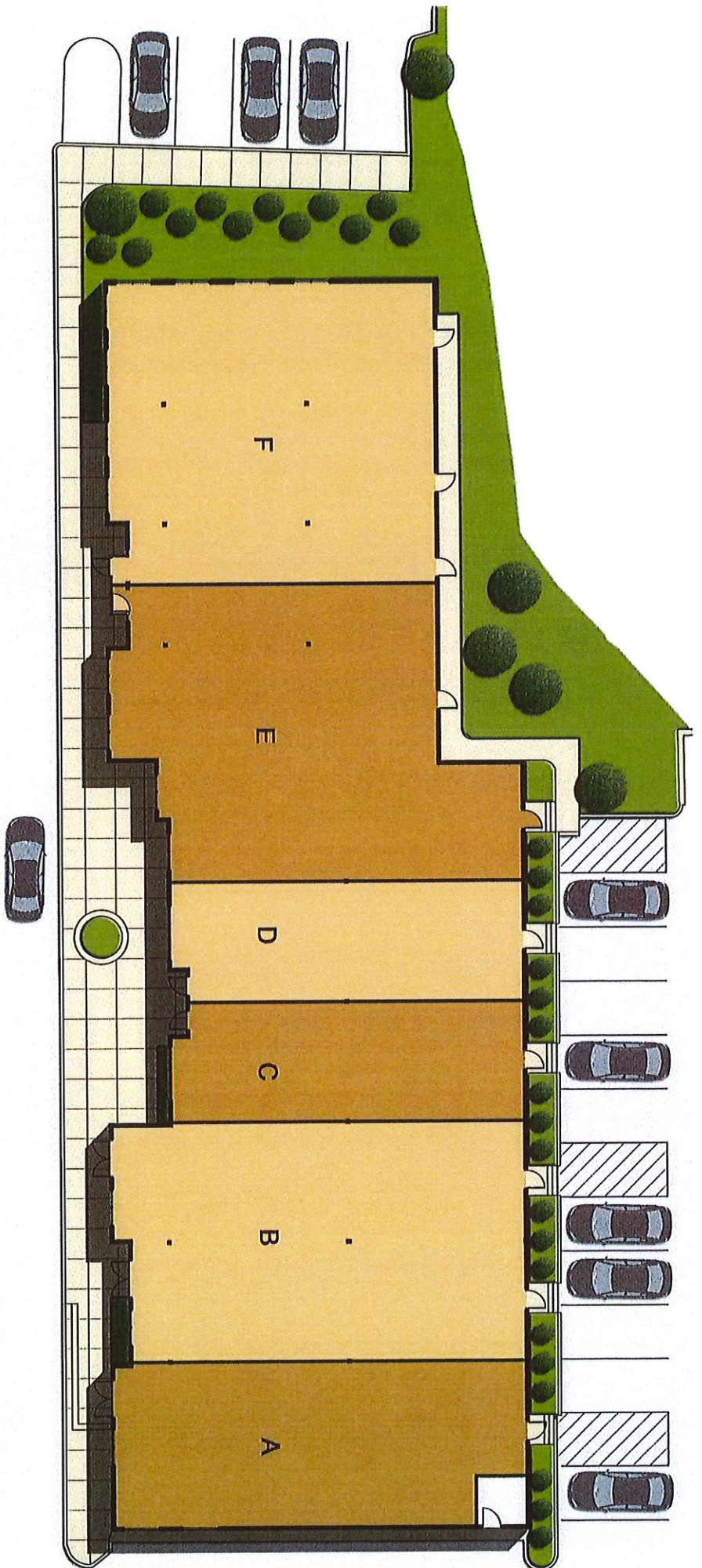
Hilltown Village

Olive Boulevard
Chesterfield, Missouri

ARCHITECTURES SP

8725 Big Bend Boulevard / Saint Louis, MO 63119
OFFICE / 314.581.5500 WEB / www.asp-nbc.com

1-27-2022



Building "A" Plan

N.T.S.



Tenant Roster

Space	Tenant	Suite No.	Area
A	Thai Sawadee	171	1,891sf
B	Dentist	173 & 175	2,740sf
C	Prime Aesthetic	177	1,200sf
D	Available	179	1,200sf
E	El Troquero	185	3,470sf
F	Eye Level	187	2,240sf
Total			12,741sf



Montgomery Properties
 20 Allen Avenue, Ste. 341
 St. Louis, MO 63119
 314-968-8033

Hilltown Village

Olive Boulevard
 Chesterfield, Missouri

ARCHITECTURES SP

8725 Big Bend Boulevard / Saint Louis, MO 63119
 OFFICE / 314.961.5500 WEB / www.asp-mo.com 1-27-2022



Tenant Roster

<u>Space</u>	<u>Tenant</u>	<u>Suite No.</u>	<u>Area</u>
A	State Farm	115	1,260sf
B	Jeans Jackets & Jewels	117	1,312sf
C	Great Clips	119	1,335sf
D	Tailoring	121	1,335sf
E	Available	123	1,165sf
F	Gianfabio's	127	4,780sf
G	Elements Massage	133	2,520sf
Total			13,707sf

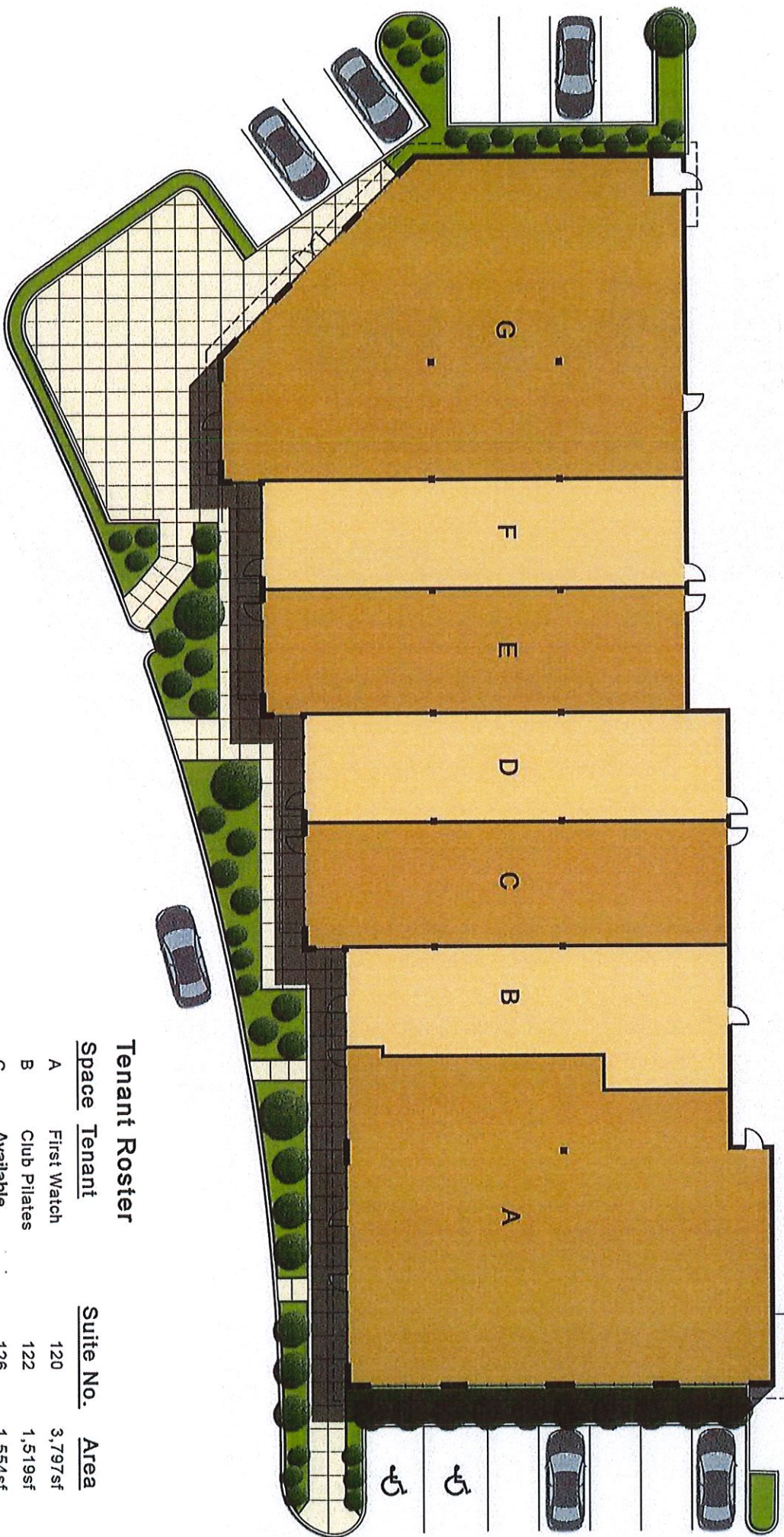
Building "D" Plan
First Floor N.T.S.



Montgomery Properties
20 Allen Avenue, Ste. 341
St. Louis, MO 63119
314-968-8033

Hilltown Village
Olive Boulevard
Chesterfield, Missouri

ARCHITECTURES SP
8726 Big Bend Boulevard / Saint Louis, MO 63119
OFFICE 314.951.5500 WEB www.asp-who.com 3-7-2022



Building "G" Plan
N.T.S.



Tenant Roster

Space	Tenant	Suite No.	Area
A	First Watch	120	3,797sf
B	Club Pilates	122	1,519sf
C	Available	126	1,554sf
D	Nail Tech	128	1,406sf
E	Available	130	1,543sf
F	Tees and Embroidery	132	1,406sf
G	Harpo's	136	3,780sf
Total			14,993sf